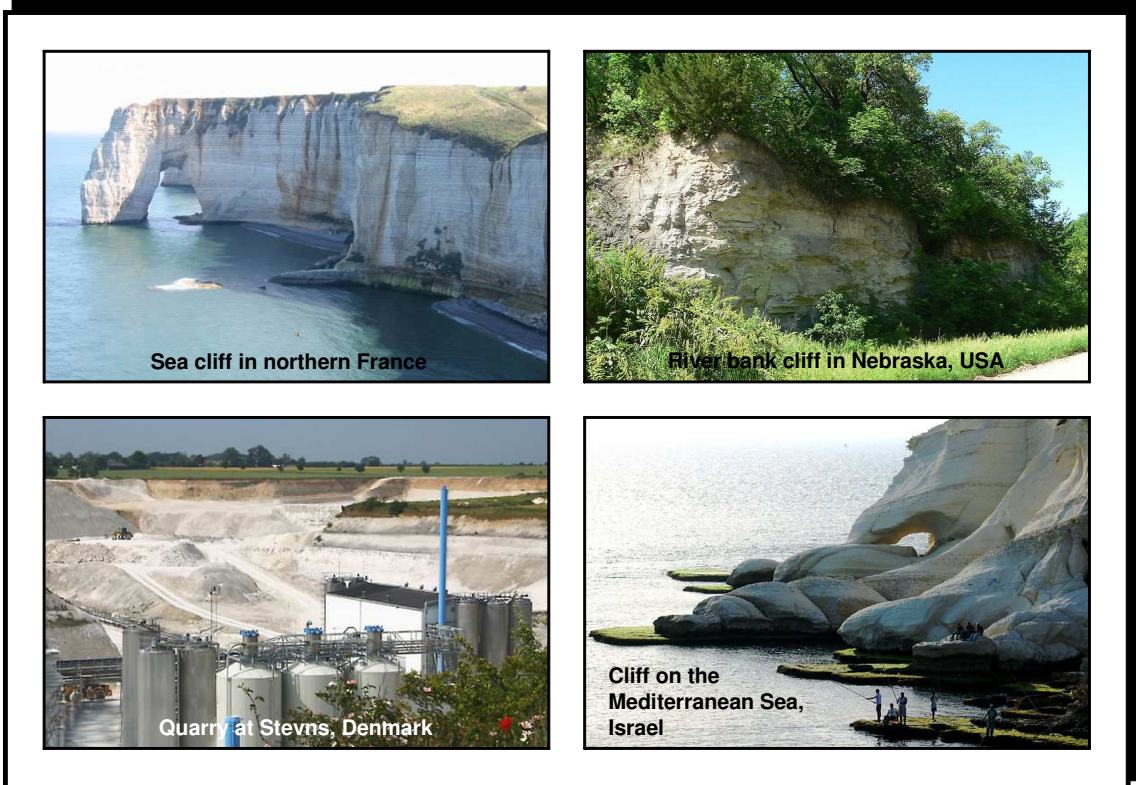


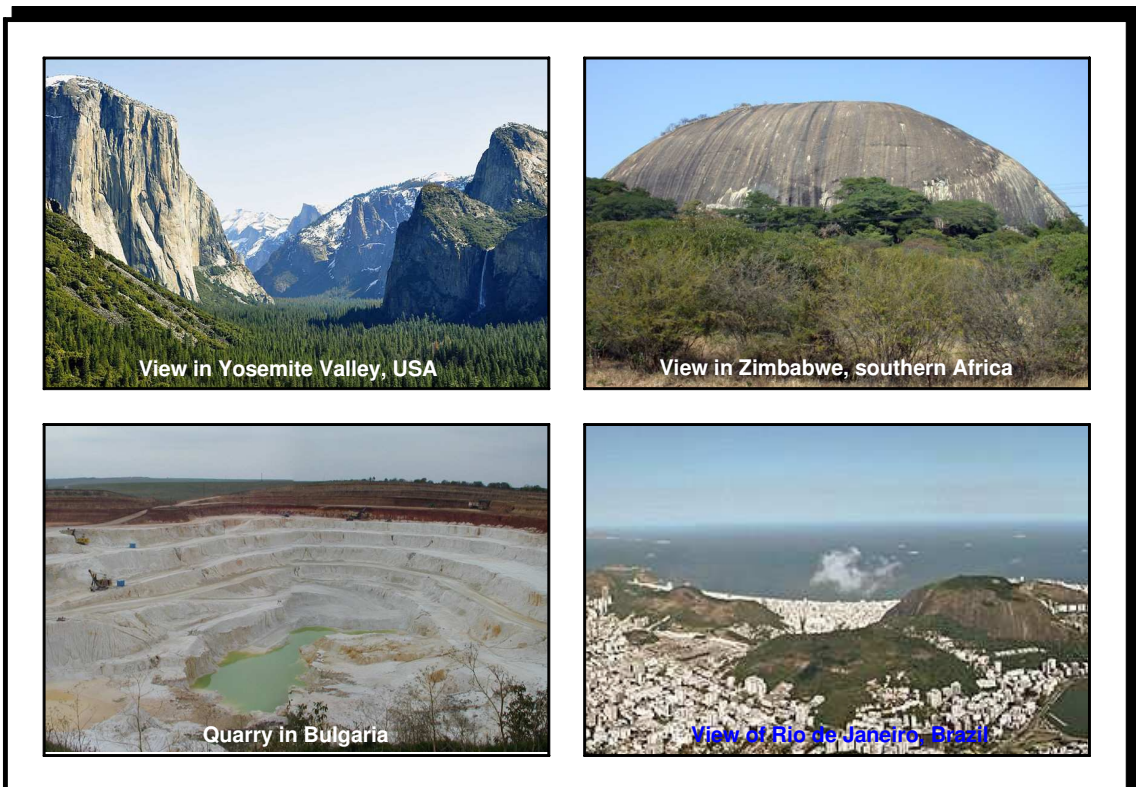
Earthlearningidea extension

**Geological postcards 1 – granite and chalk
Picture postcard puzzles – with ‘global’ postcards**

Postcard 1



Postcard 2



Context: This activity can be used as a revision exercise in the properties of different rock types. It can also help to bridge the divide between science and geography in schools. The real locations of the photographs are:

CHALK:

- Sea cliff in Northern France – Etretat, Seine-Maritime, France.

Permission is granted to copy, distribute and/or modify this document under the terms of the GNU Free Documentation License

- Quarry at Stevns, Denmark - The chalk pit at the cliff Stevns, Denmark.

I, Malene Thyssen, the copyright holder of this work, hereby publish it under the GNU Free Documentation License.

- Riverbank cliff in Nebraska, USA – Chalk cliff on south bank of Republican River, south of Red Cloud, Nebraska and west (upstream) of U.S. Highway 281.

I, Ammodramus, the copyright holder of this work, release this work into the public domain. This applies worldwide.

- Cliff on the Mediterranean sea, Israel – Rosh Haniqra, Israel. Rosh Hanikra ("head of the rock caves") is a geologic formation in Israel, located on the coast of the Mediterranean Sea, in the Western Galilee near the border with Lebanon. It is a white cliff face which opens up into spectacular grottos. The Rosh Hanikra grottos are cavernous tunnels formed by sea action on the soft chalk rock. The total length is some 200 meters.

The copyright holder of this file, Ester Inbar, allows anyone to use it for any purpose, provided that the copyright holder is properly attributed.

GRANITE:

- View in Yosemite Valley, USA - Yosemite Valley Tunnel view 2010.

Permission is granted to copy, distribute and/or modify this document under the terms of the GNU Free Documentation License by author, Chensiyuan.

- Quarry in Bulgaria – A kaolinite mineral mine in Bulgaria, photo by Nikola Gruev.

Permission is granted to copy, distribute and/or modify this document under the terms of the GNU Free Documentation License.

- View in Zimbabwe, southern Africa – A kopje near Masvingo, Zimbabwe.

Permission is granted to copy, distribute and/or modify this document under the terms of the GNU Free Documentation License by author, Trymore MacVivo.

- View of Rio de Janeiro, Brazil

This file is licensed under the Creative Commons Attribution-Share Alike 2.0 Generic license, by its author, Jens Hausherr.

Source: 'Postcards' by Chris King, based on an Earthlearningidea devised by Peter Kennett, both of the Earthlearningidea team.

© **Earthlearningidea team.** The Earthlearningidea team seeks to produce a teaching idea regularly, at minimal cost, with minimal resources, for teacher educators and teachers of Earth science through school-level geography or science, with an online discussion around every idea in order to develop a global support network. 'Earthlearningidea' has little funding and is produced largely by voluntary effort.

Copyright is waived for original material contained in this activity if it is required for use within the laboratory or classroom. Copyright material contained herein from other publishers rests with them. Any organisation wishing to use this material should contact the Earthlearningidea team.

Every effort has been made to locate and contact copyright holders of materials included in this activity in order to obtain their permission. Please contact us if, however, you believe your copyright is being infringed: we welcome any information that will help us to update our records. If you have any difficulty with the readability of these documents, please contact the Earthlearningidea team for further help.

Contact the Earthlearningidea team at: info@earthlearningidea.com